

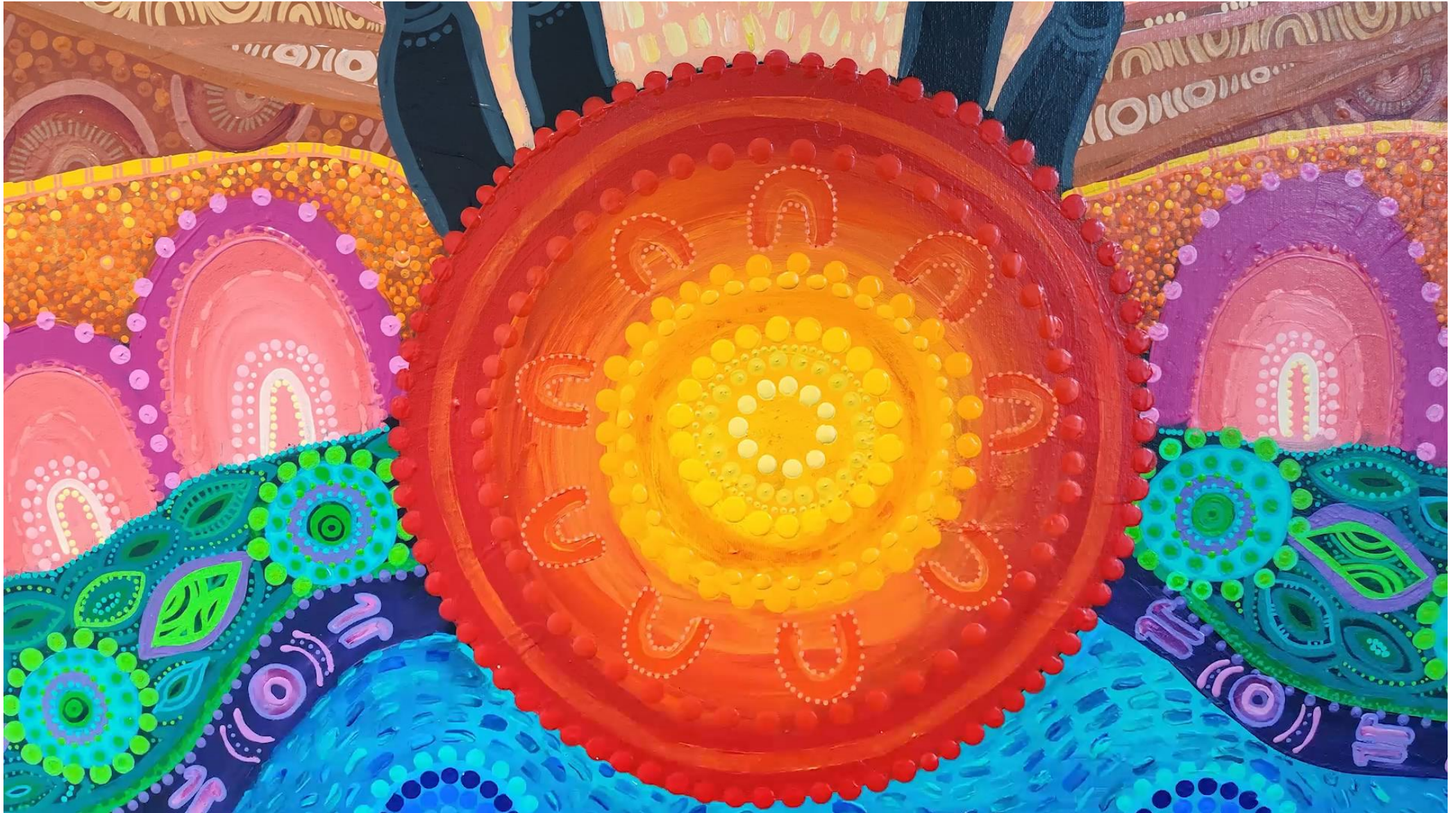


JORDAN SPRINGS PUBLIC SCHOOL

Kindergarten Orientation
Session 1



Acknowledgement of Country



KINDERGARTEN ORIENTATION

SESSION 1 OUTLINE

- Our Quality World School with Mrs Walker
- Back to Basics – School Uniform
- Before and After School Care – OOSH
- School Canteen – Flexi Schools
- Exit Slip





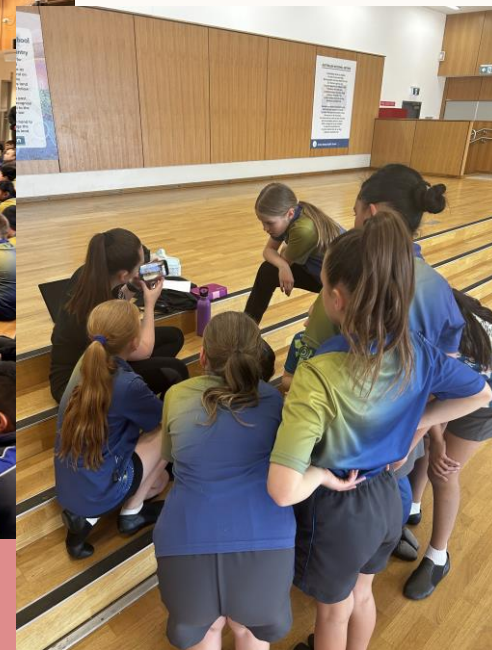
JORDAN SPRINGS PUBLIC SCHOOL

Kylie Walker – Principal
Our Quality World School

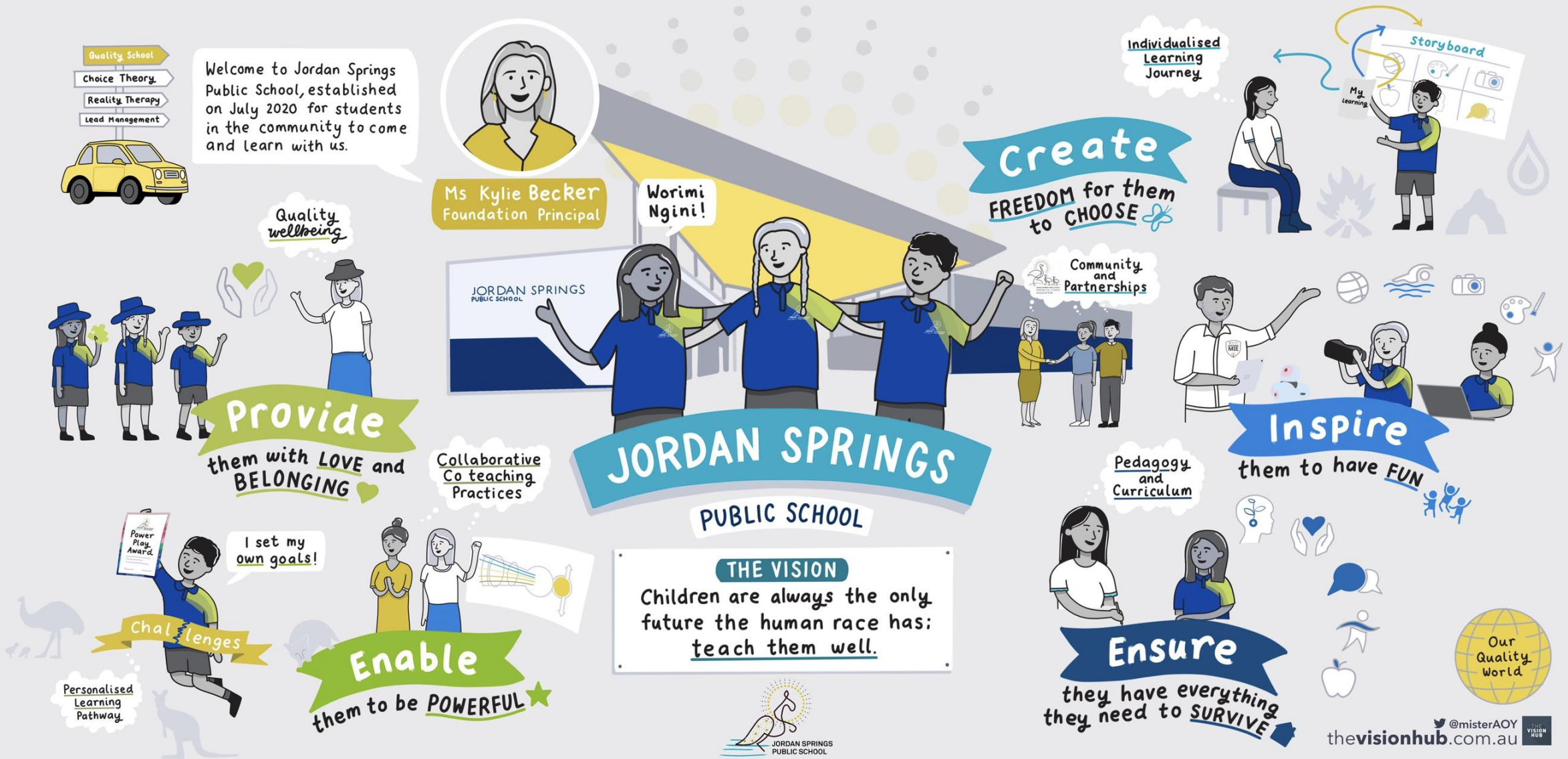


HOW WE LEARN IMPACTS OUR VISION

[How We Learn - YouTube](#)



OUR VISION



BASIC HUMAN NEEDS



Brains will first ask,
'Am I safe?'
then,
'Am I loved?'

Only when the answer to these is 'yes',
will it then be ready to ask,
'What can I learn?'

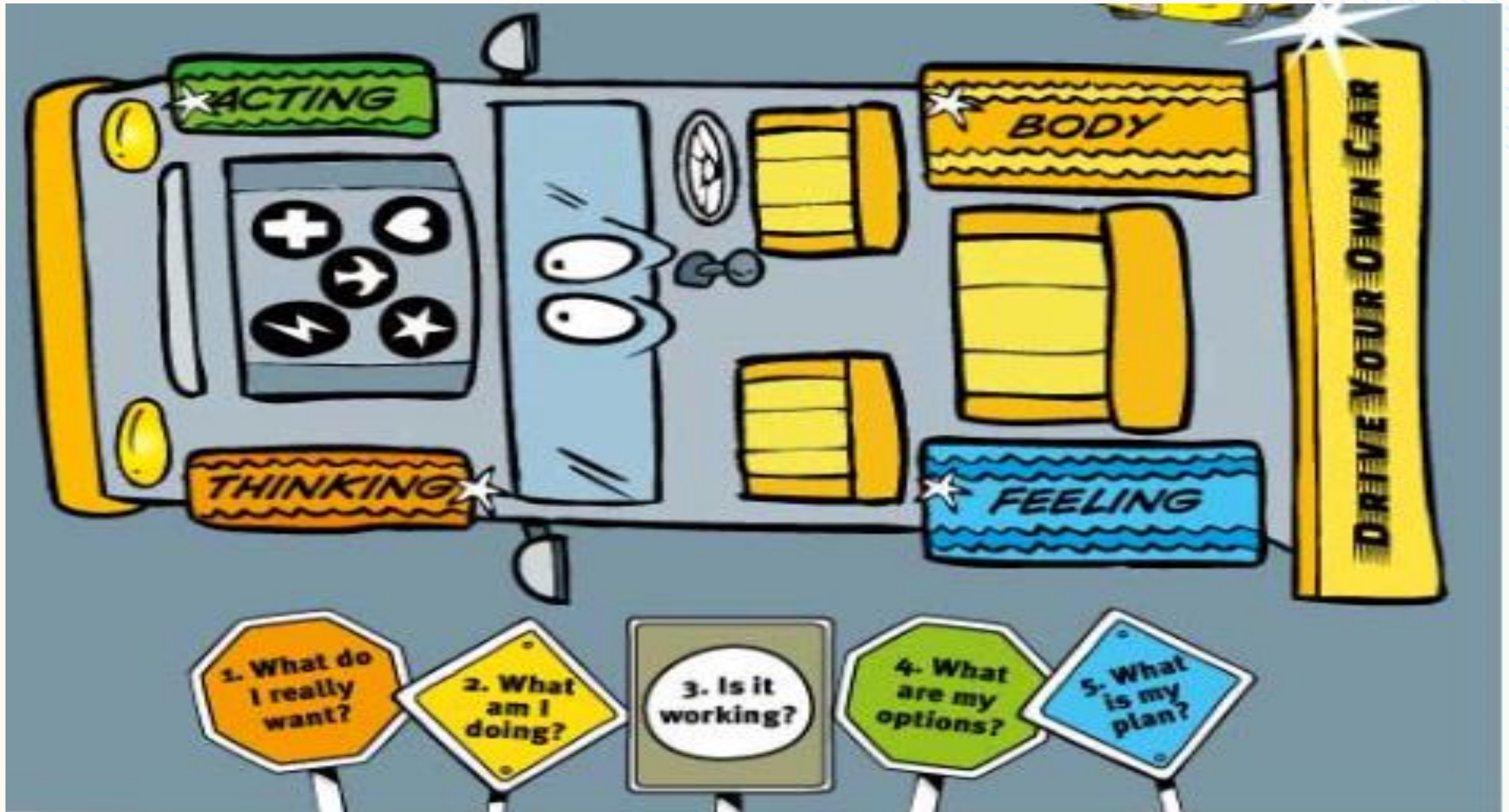
QUALITY WORLD CONVERSATIONS:

THE POSITIVE OUTCOME PROCESS

Conversations to see the best in everyone and
solve our problems



QUALITY CARS AT OUR SCHOOL



TO HAVE GREAT RELATIONSHIPS, WE NEED TO PRACTICE OUR CONNECTING BEHAVIOURS!



Role Play is demonstrated and practiced all the time so the students can work through issues and trends relevant to them.

Our Mechanics always practice in Professional Learning each week.



ROLE PLAY – STUDENT TO STUDENT¹

Gurleen has been pushed off the logs during playtime at school. Luv has noticed that Gurleen is upset and attempts to help her solve the situation.

- This is the first time the incident has happened
- Both the students normally play together
- Luv is an older student at our school



ROLE PLAY - TEACHER TO STUDENT



Noah wants to play with the new toy train during play-based learning, but Jack has taken it out of his hands. Miss Bartlett has noticed that Noah is sitting by himself and is upset and attempts to solve the problem.

- This is the first time the incident has happened
- Noah normally plays at the train table
- Jack is a new student at our school

ROLE PLAY - PRINCIPAL TO STUDENT⁴








Jay is starting at a new High School next year. No other students from our school are going to be attending his high school. Jay is nervous about his transition next year.

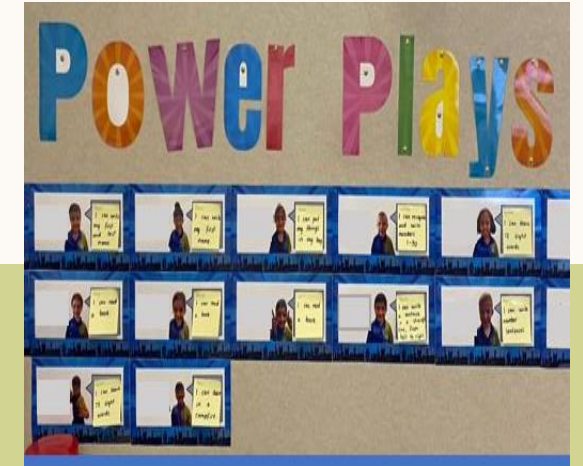
- Jay is missing the first 3 weeks of high school because he will be on a family holiday
 - Jay is a leader of our school****
- Jay is happy that he is attending Blacktown Boys HS
 - Jay is very social and enjoys sport****

OUR MECHANICS AT WORK



In order for the student to be a member of the school community and have the shared belief systems identified as a school, what do we need to build into the classroom space to help them?

Love / Belonging	Power	Freedom	Fun	Survival
				
Provide: <ul style="list-style-type: none"> Connectedness to his homelife teacher Opportunities to make friends and socialize with his peers. Time to develop relationships with his teachers to enable him to communicate his needs. Time, space, and visuals to assist him with his sense of belonging within the home base. 	Enable: <ul style="list-style-type: none"> him to approach his teachers for help. to communicate effectively with his peers to form relationships. Start independently and sustain attention on his work. sharing his work with his choice of teachers or sending quality work home to share. 	Create: <ul style="list-style-type: none"> To choose where he'd like to complete his learning. To choose the activity that draws on his interests. 	Inspire: <ul style="list-style-type: none"> Connecting with his peers and forming friendships use technology to engage and support in learning. borrow equipment to use in the playground. 	Ensure: <ul style="list-style-type: none"> He knows that his teachers are here to support and help him. His school is safe. He knows the people are there to look after him. He can communicate his needs.



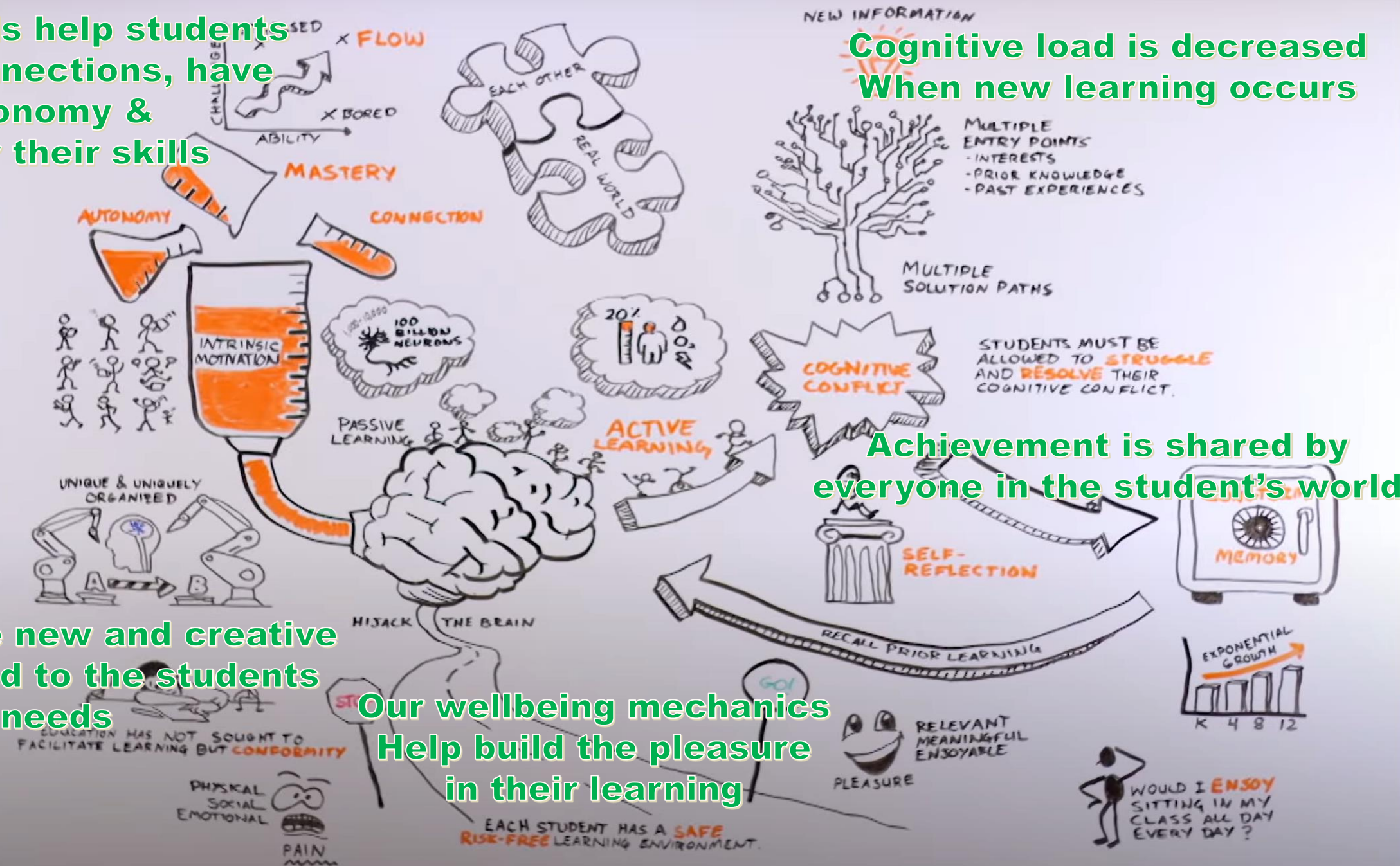
OUR TEACHING MECHANICS HELP OUR STUDENTS UNDERSTAND THEIR BEHAVIOURS AND SUPPORT THEM TO BUILD QUALITY RELATIONSHIPS WITH OTHERS.

UNDERSTANDING OUR CAR SEES OUR STUDENT MECHANICS TUNING THEIR ENGINES

OUR STUDENTS ARE PROFILED ON THEIR BASIC NEEDS SO WE CAN HELP THEM LIVE THEIR BEST LIFE AT SCHOOL

STUDENT MECHANICS DETERMINE THEIR OWN LEARNING GOALS TO BE CELEBRATED WITH THE SCHOOL

Storyboards help students
make connections, have
autonomy &
Master their skills



Cognitive load is decreased
When new learning occurs

Achievement is shared by
everyone in the student's world

Lessons are new and creative
And tailored to the students
needs

Our wellbeing mechanics
Help build the pleasure
in their learning

THANK YOU



JSPS UNIFORM

18

**Back to Basics
School Wear**

**52 Cox Avenue,
Kingswood 2747**

**Monday – Friday
8am – 4:30pm
Saturday 9am-12pm**

Order Now!





Before School: 6am – 8:25am

After School: 2:55-6:30pm

School Holidays: 6am – 6pm

Register Here!



OSH CLUB

Welcome to OSHClub

Let's go!

OSHClub pride ourselves on providing your children with fun, play-based learning experiences before and after school as well as during the school holidays. Whether your child attends OSHC daily or only occasionally, each visit is an exciting and engaging adventure!

Compelling programs

Our Adventures are created for children and they get to choose which Adventure they'd like to bring to life.

Educators who care

Our educators will embrace your child's journey: caring deeply, thinking creatively and inspiring them to thrive.

Future ready

We focus on building knowledge, skills and behaviours that help prepare your child for whatever the future may hold.

Unified partnership

As an integral part of the school community, together we'll create a fun and engaging environment for your child to flourish.

Fabulous food

We fuel curious minds and growing bodies, helping to shape your child's understanding of health and wellness positively.

Peace of mind

You can be confident that your child is safe, happy and given every opportunity to fulfill their potential.

Join the fun. Be active. Get together.

Key Service information

Jordan Springs OSHClub

PROGRAM	TIMES	FULL FEES	FEE AFTER 90% CCS*
Before School Care - Rise then Shine	06:00 AM - Bell Time	\$21.50	\$2.15
After School Care - Stay and Play	Bell Time - 06:30 PM	\$26.00	\$2.60
Holiday Programs	06:00 AM - 06:00 PM	\$60.00	\$6.00

Fees and hours of operation as at term 1, 2023 and may be subject to change

Enrolments

Enrolling with OSHClub is easy and completely free, just head to our website oshclub.com.au and click Join OSHClub. Your child's enrolment must be confirmed before attending their first session with us.

Bookings & cancellations

Once enrolled, you can manage your bookings and cancellations with ease online or via the Kidssoft app.

Before & After School Care - Rise then Shine/Stay and Play
Bookings can be made online any time up to 24 hours before the session commences. To make a booking after this time, please contact your service directly on 0429 018 989. Late bookings will incur an additional \$4.00 fee.

To avoid any out of pocket costs, cancellations must be made at least 48 hours before the session commences. Cancellations within this period will incur the full fee, less any applicable CCS.

Holiday Program

Holiday bookings can be made online up to 5 days before the session commences. To make a booking after this time, please contact your service directly on 0429 018 989. Late bookings will incur an additional \$4.00 fee.

To avoid any out of pocket costs, cancellations must be made at least 7 days before the session commences. Cancellations within this period will incur the full fee, less any applicable CCS.

Child care subsidy (CCS)*

Many families are eligible for Child Care Subsidy (CCS), which can reduce the cost of Outside School Hours Care by up to 85%. All our services are CCS approved, so we encourage all families to find out whether they are eligible. To establish what level of CCS you may be entitled to please contact the Centrelink Family Line on 13 61 50.

Statements & payments

Fees will be automatically debited every 2 weeks in arrears from the bank account, VISA or MasterCard you nominated during enrolment. Transaction fees apply. Dishonour fee will also be applicable if a transaction is declined. You can view your statements via your online account.

Late pick-up

A \$1.00 per minute, per child fee may apply for children picked up after the service close time.

No show

An additional \$5.00 fee per child may be charged for any After School Care booking where no cancellation is provided.

Incursions & excursions

Holiday program incursions and excursions may incur additional fee. These vary based on activity and may be subject to change.

For account specific enquiries, please contact our Customer Service and Billing Team on 1300 395 735 or email oshaccounts@jordanadventuresgroup.com.au. Our team are available 9am - 7pm Monday - Friday (AEST/AEDT).

Medical management

So we can provide the best and safest care, it is important that you inform the service if your child/ren has an identified health care need, allergy or relevant medical condition diagnosed by a registered medical practitioner. On your first day of attendance, bring along a completed Risk Minimisation form, Medical Management forms and any required medications. All medications (including ointments and creams) must be prescribed by a medical practitioner, be in the original container with original pharmacist labels and clear instructions. All labels must be legible and undamaged, and the medication must still be within its expiry date.

We're here to help!

Come and see us in-service, email or give us a call.
We look forward to welcoming you soon

0429 018 989

jordansprings@oshclub.com.au
OSHClub.com.au



SCHOOL CANTEEN

20

Canteen menu can be accessed via the Flexischools App. Just search for Jordan Springs Public School.

Please ensure your child knows if they have a recess and/or lunch order.

School communication systems in place to support.





UNTIL NEXT TIME...

21

Session 2 – Wednesday 1st November

- Answering your FAQs
- Play-Based Learning at JSPS
- Literacy and Numeracy with our APCI
- School Communication Platforms with Ms Mitchell





UNTIL NEXT TIME...

22

Session 2 – Wednesday 1st November

- Answering your FAQs
- Play-Based Learning at JSPS
- Literacy and Numeracy with our APCI
- School Communication Platforms with Ms Mitchell

